



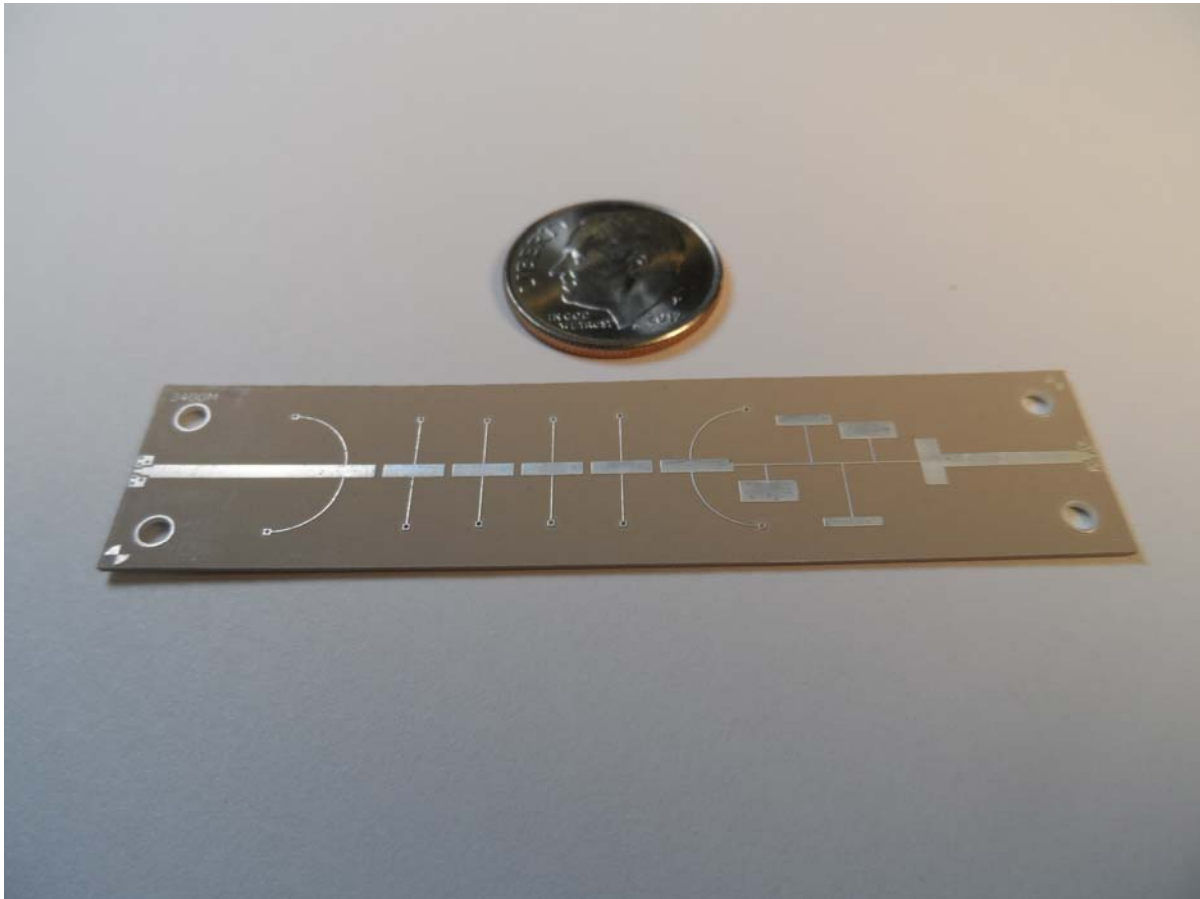
**Typical Characteristics
for
6SFB-100M18G-1MP-MAH**

Filter Data
to be used
in
6SFB-100M18G-1MP-MAH

September 16, 2013



**Typical Characteristics
for
6SFB-100M18G-1MP-MAH**



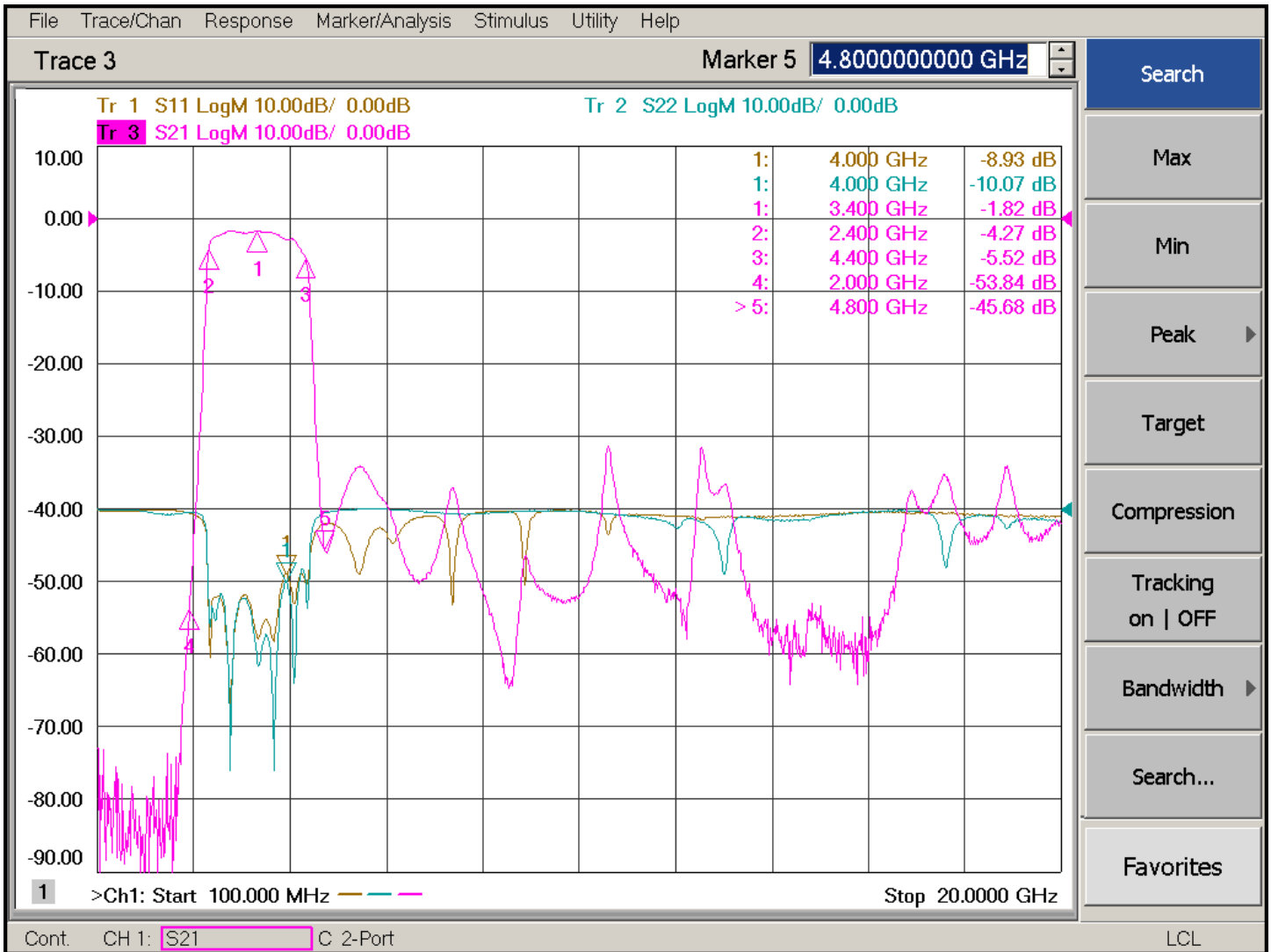
Filter 1: 2.4 – 4.4 GHz



Typical Characteristics for 6SFB-100M18G-1MP-MAH

Channel 1: 2.4 – 4.4 GHz Bandpass Filter

BROAD BAND INSERTION LOSS AND RETURN LOSS

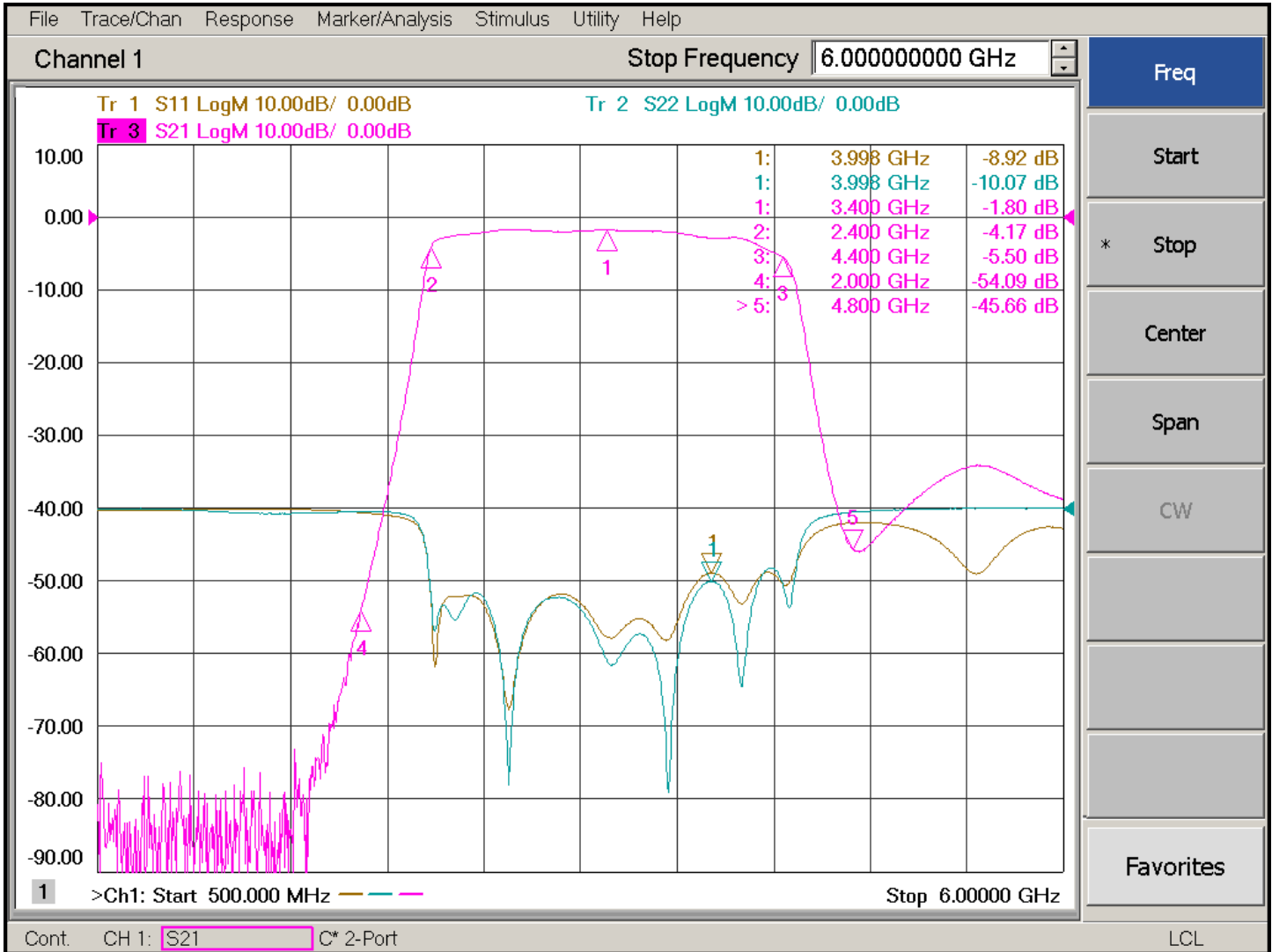




Typical Characteristics for 6SFB-100M18G-1MP-MAH

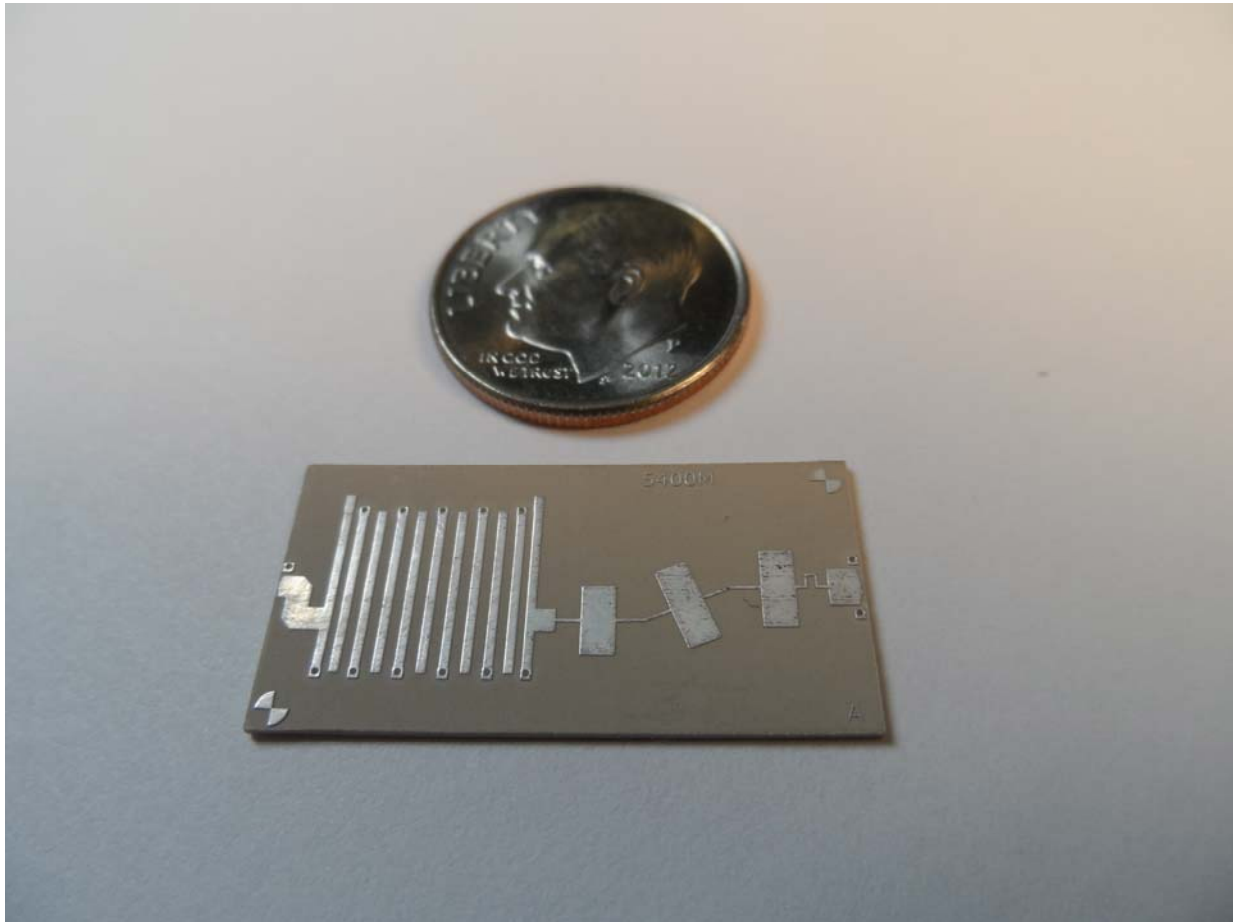
Channel 1: 2.4 – 4.4 GHz Bandpass Filter

NARROW BAND INSERTION LOSS AND RETURN LOSS





**Typical Characteristics
for
6SFB-100M18G-1MP-MAH**



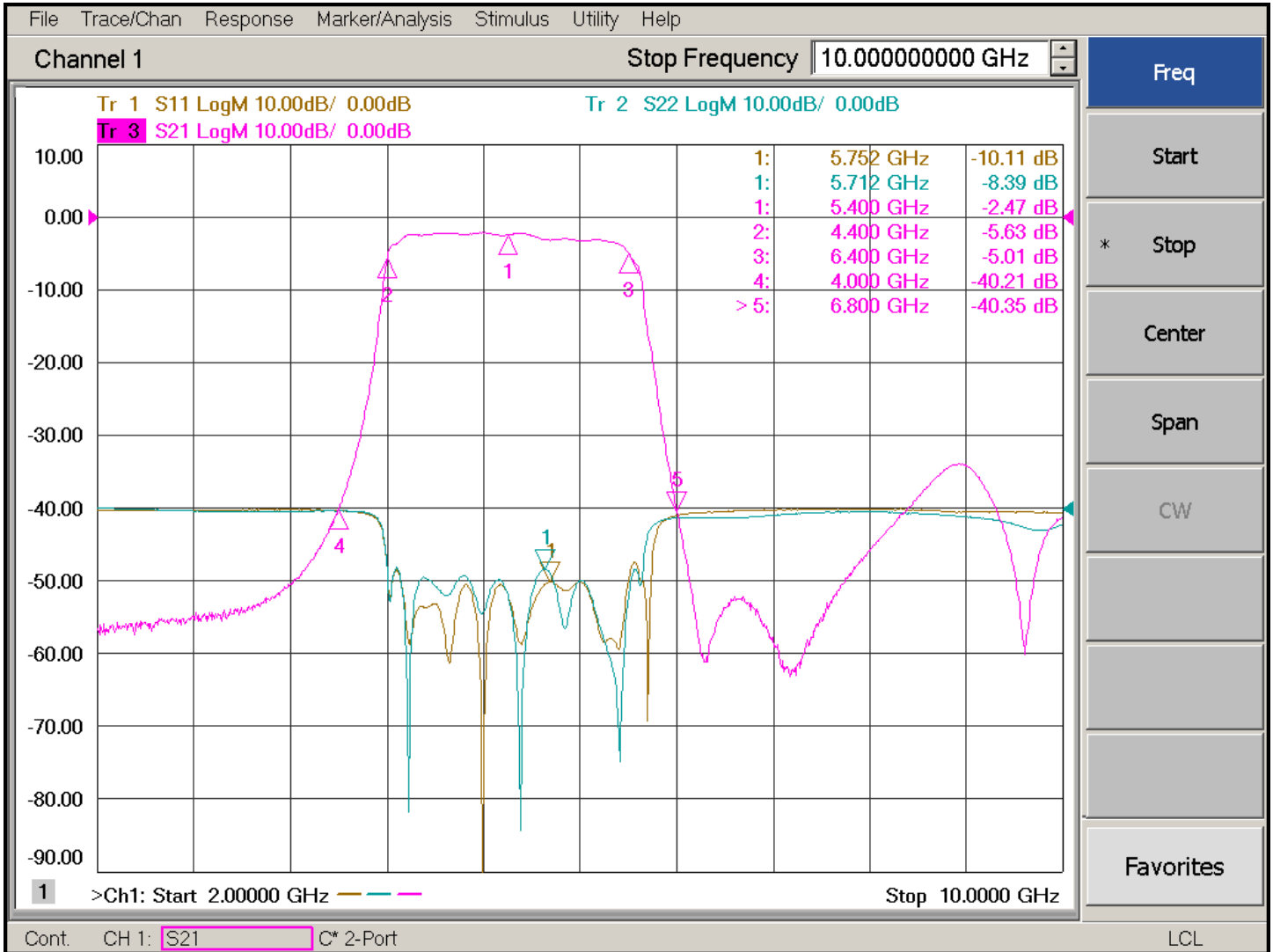
Filter 2: 4.4 – 6.4 GHz



Typical Characteristics for 6SFB-100M18G-1MP-MAH

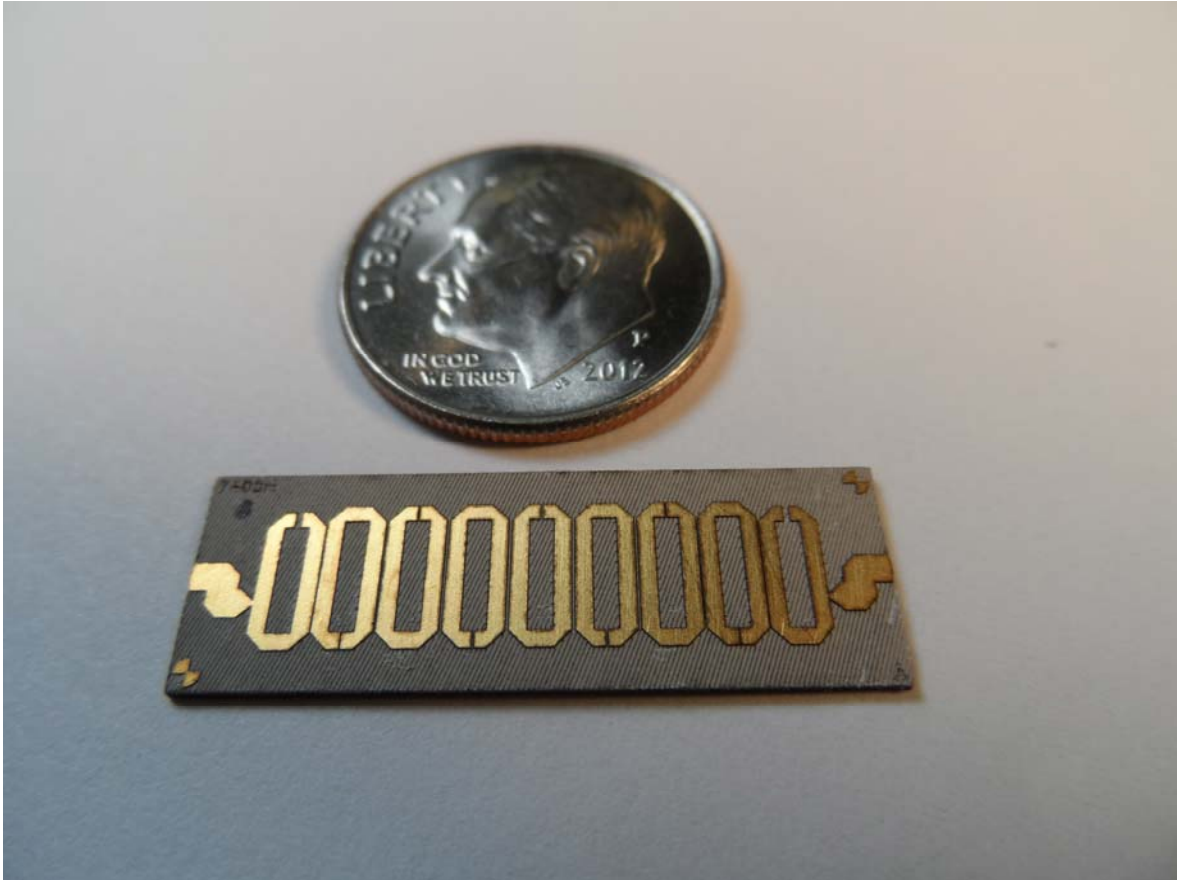
Channel 2: 4.4 – 6.4 GHz Bandpass Filter

NARROW BAND INSERTION LOSS AND RETURN LOSS





**Typical Characteristics
for
6SFB-100M18G-1MP-MAH**



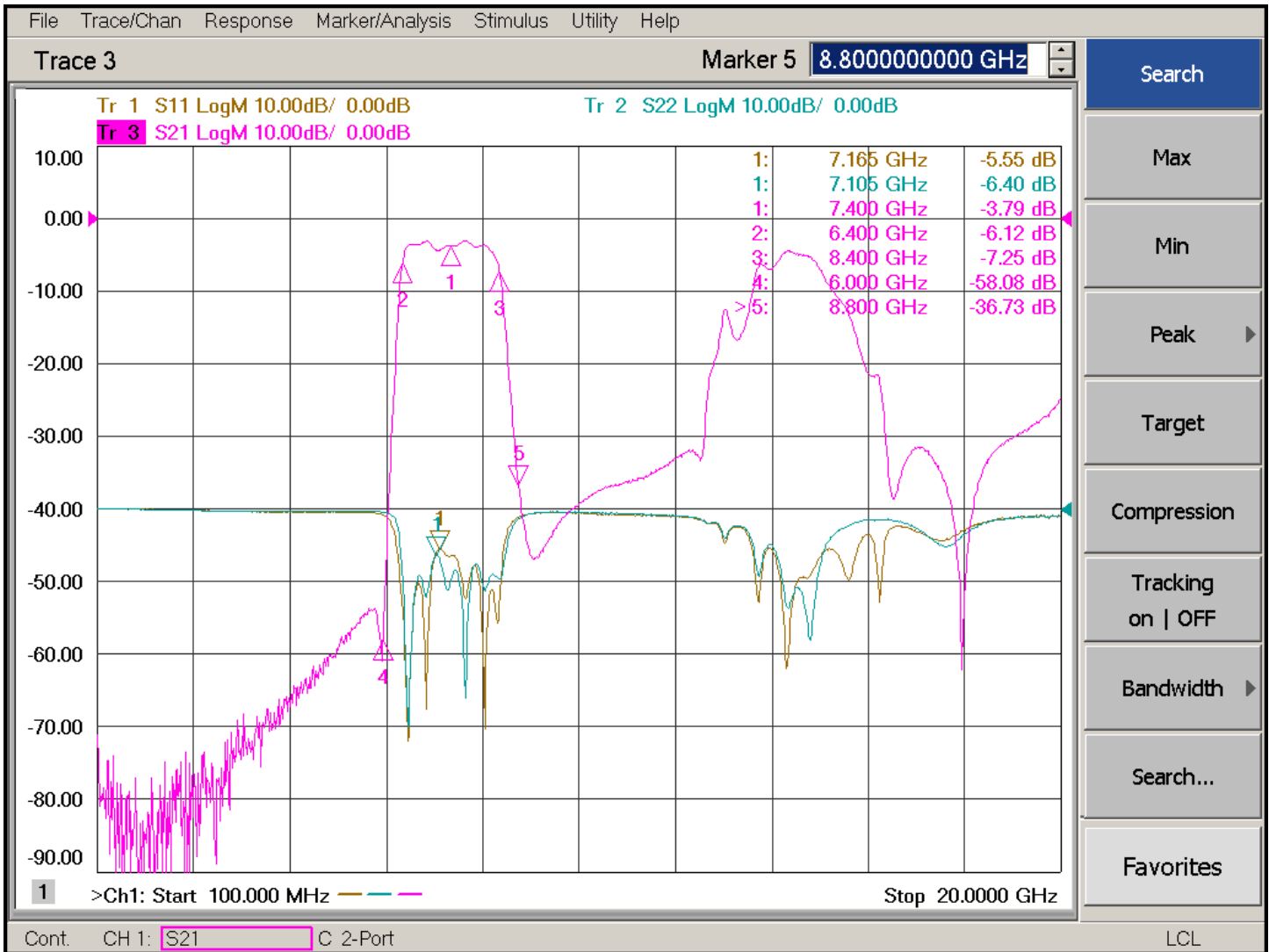
Filter 3: 6.4 – 8.4 GHz



Typical Characteristics for 6SFB-100M18G-1MP-MAH

Channel 3: 6.4 – 8.4 GHz Bandpass Filter

BROAD BAND INSERTION LOSS AND RETURN LOSS

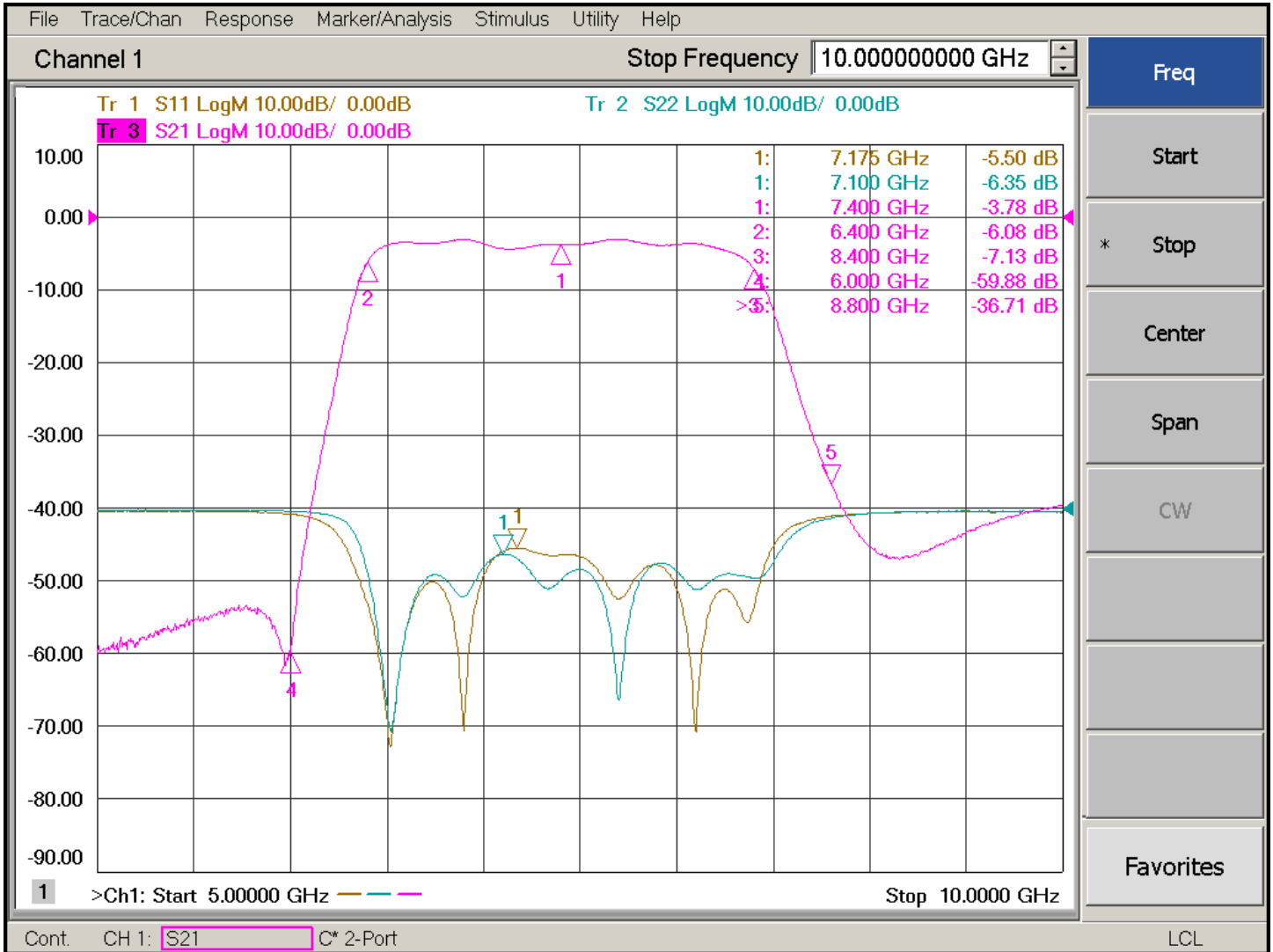




Typical Characteristics for 6SFB-100M18G-1MP-MAH

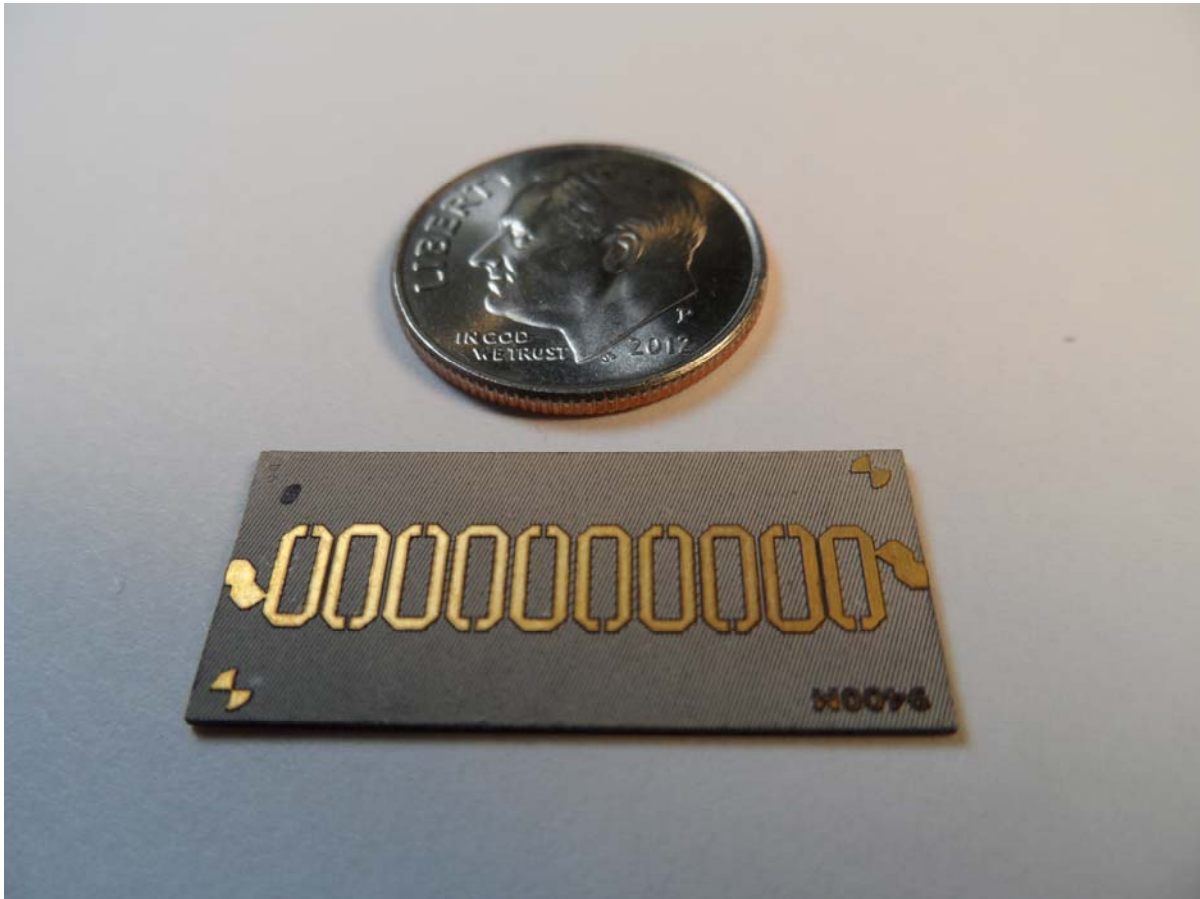
Channel 3: 6.4 – 8.4 GHz Bandpass Filter

NARROW BAND INSERTION LOSS AND RETURN LOSS





**Typical Characteristics
for
6SFB-100M18G-1MP-MAH**



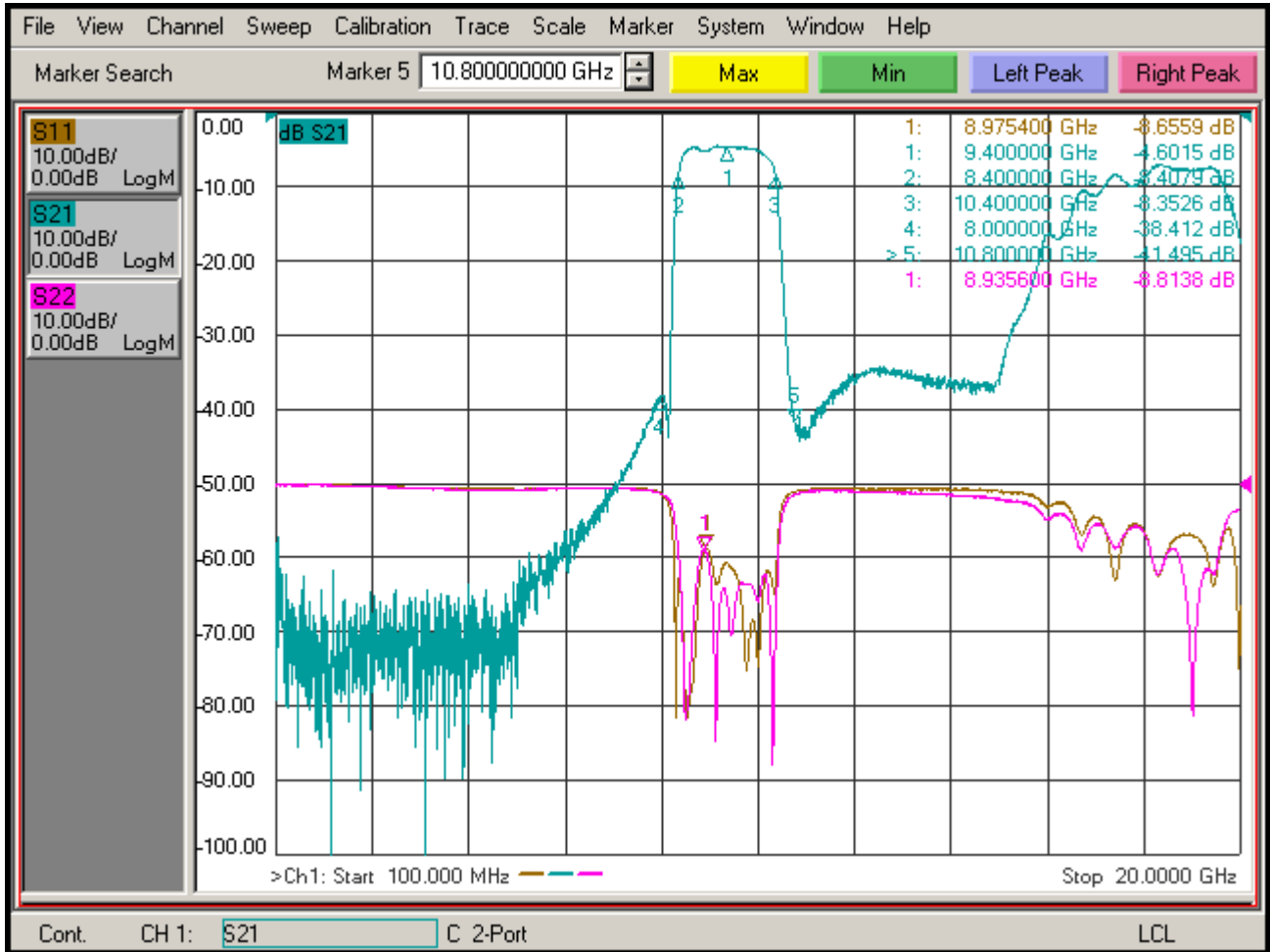
Filter 4: 8.4 – 10.4 GHz



Typical Characteristics for 6SFB-100M18G-1MP-MAH

Channel 4: 8.4 – 10.4 GHz Bandpass Filter

BROAD BAND INSERTION LOSS AND RETURN LOSS





Typical Characteristics for 6SFB-100M18G-1MP-MAH

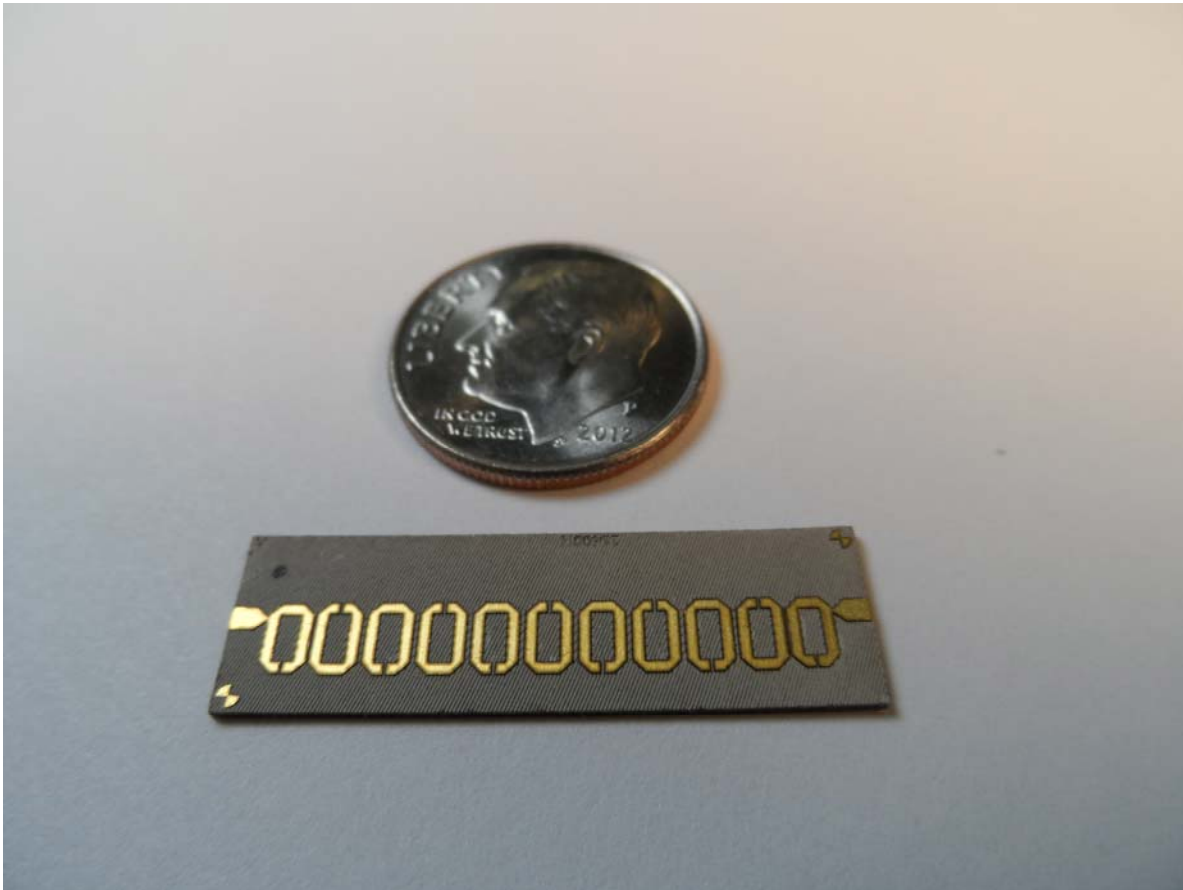
Channel 4: 8.4 – 10.4 GHz Bandpass Filter

NARROW BAND INSERTION LOSS AND RETURN LOSS





**Typical Characteristics
for
6SFB-100M18G-1MP-MAH**



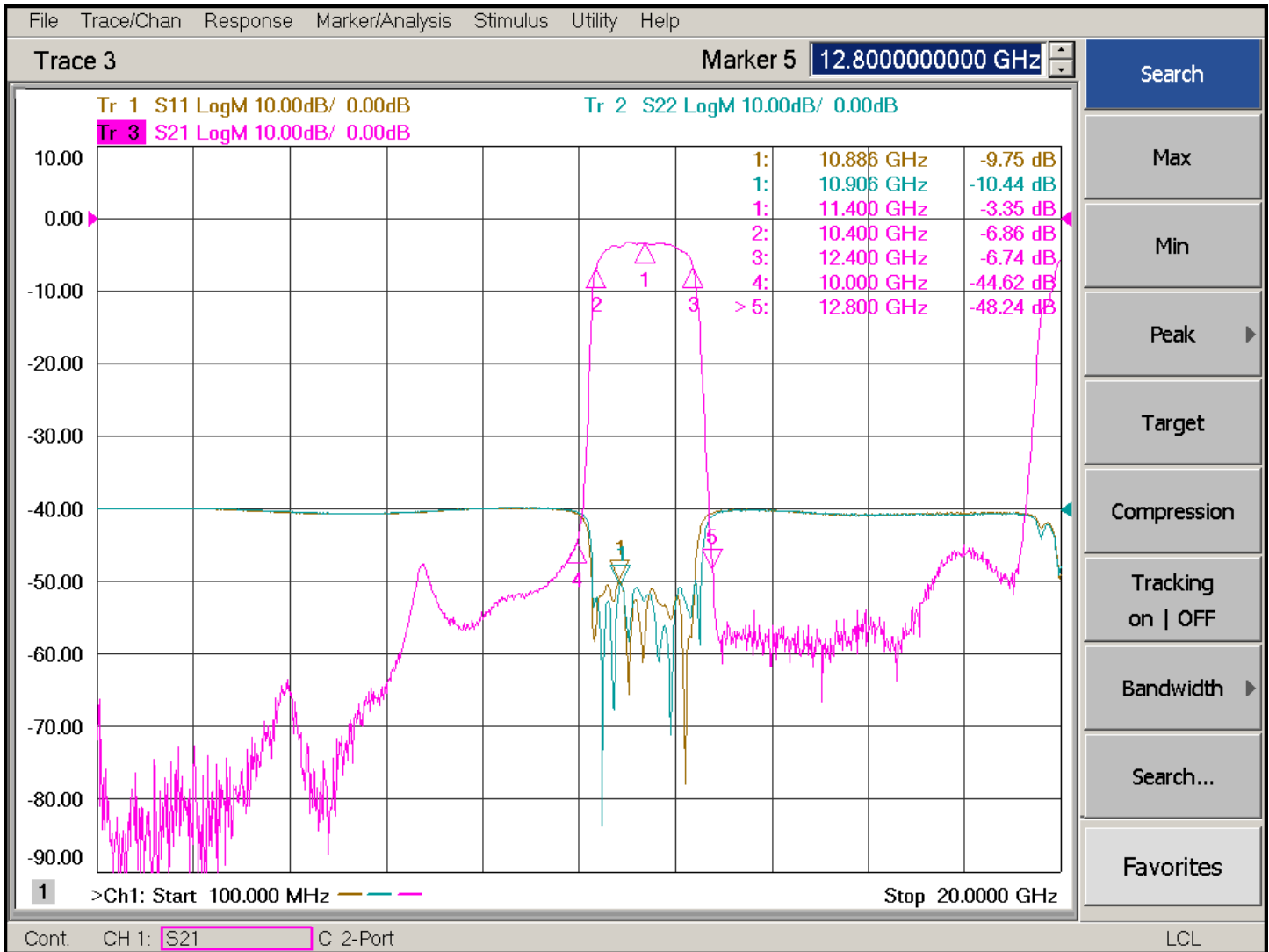
Filter 5: 10.4 – 12.4 GHz



Typical Characteristics for 6SFB-100M18G-1MP-MAH

Channel 5: 10.4 – 12.4 GHz Bandpass Filter

BROAD BAND INSERTION LOSS AND RETURN LOSS





Typical Characteristics for 6SFB-100M18G-1MP-MAH

Channel 5: 10.4 – 12.4 GHz Bandpass Filter

NARROW BAND INSERTION LOSS AND RETURN LOSS

